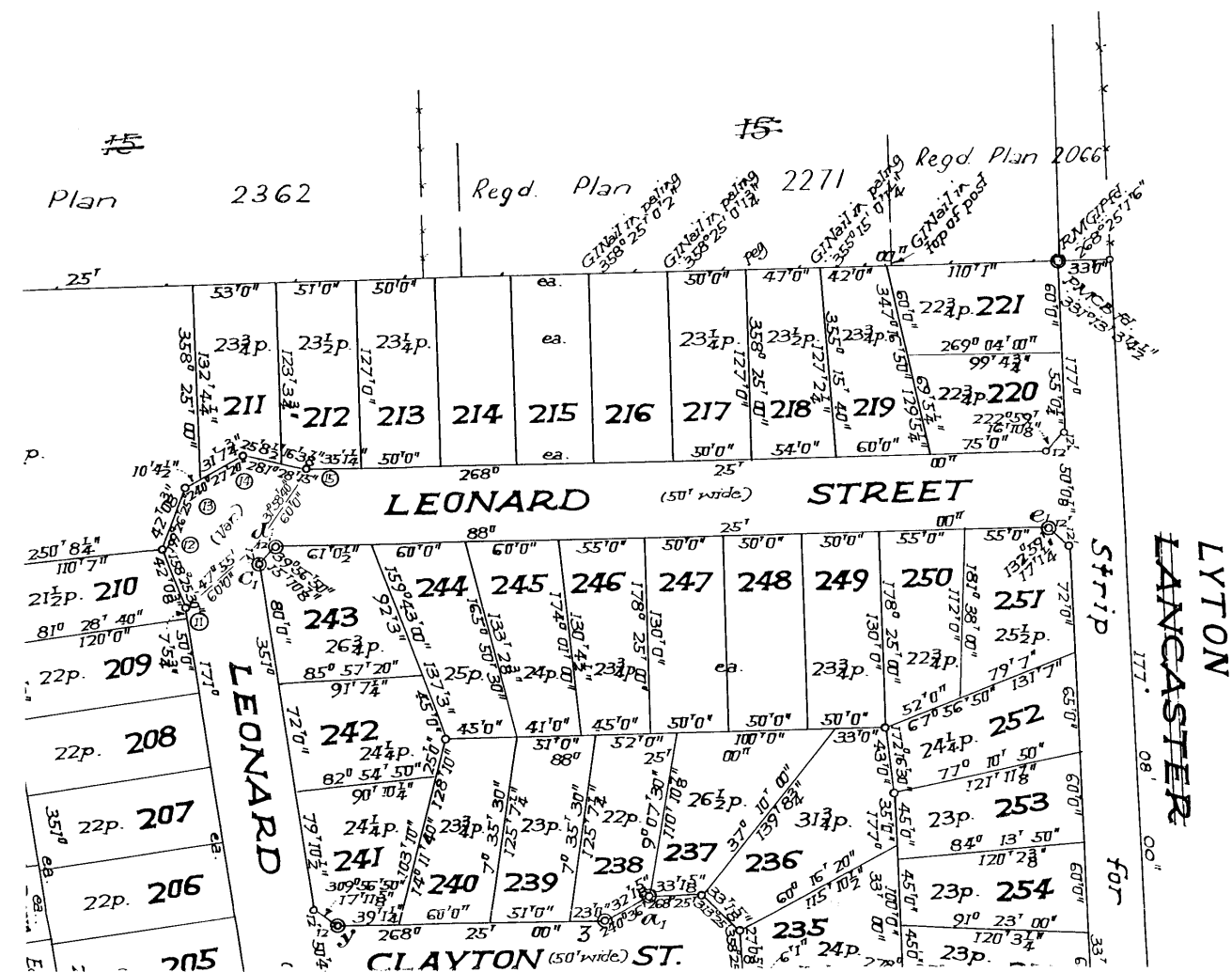
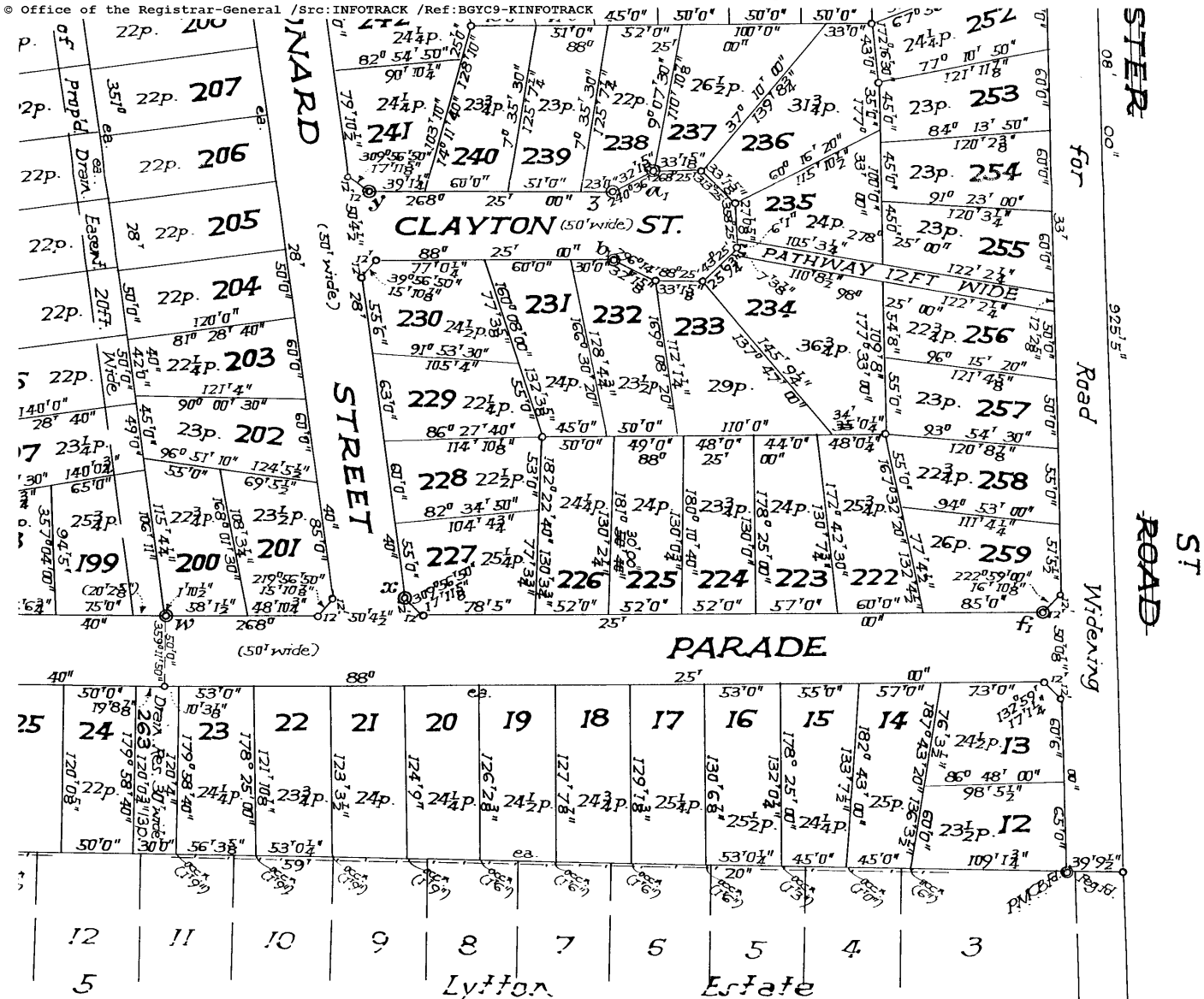


D. P. 32163 (E)

Sheet 2 of 2 sheets

M/M.





Boundaries 6-7, 7-8, 8-9, and 9-10 are equal chords
 of a circle of radius 60 feet.
 Boundaries 11-12, 12-13, 13-14 and 14-15 are equal chords
 of a circle of radius 60 feet.

Alterations and amendments
 made by me this 2nd day of June 1961.

L. J. O'Keefe

D.P. 32163 (E) 2/2

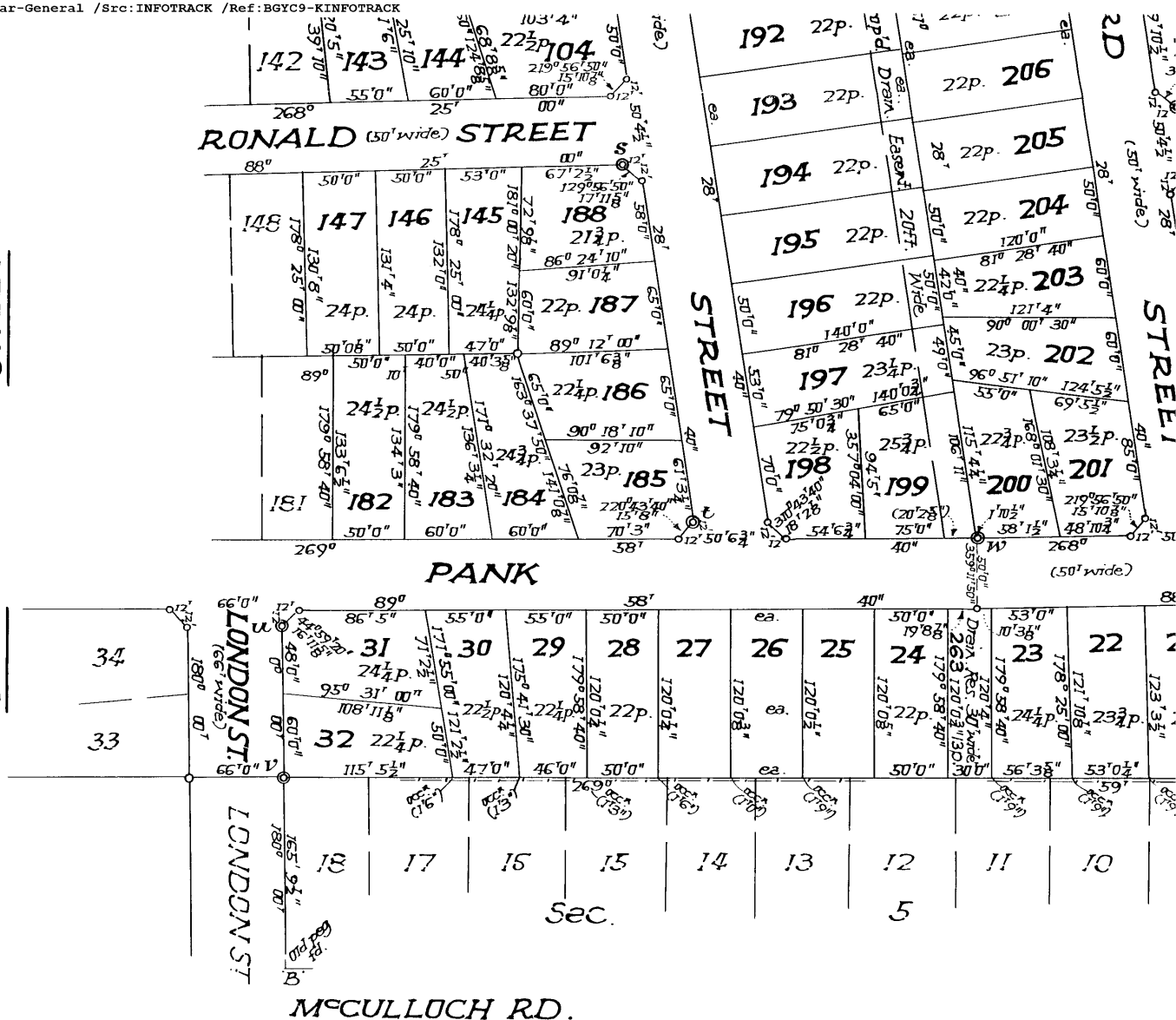
This is Sheet 2 of the plan referred to
 in my declaration of 16th Sept., 1960.

L. J. O'Keefe

Surveyor registered under the Surveyors Act 1929-46.

SHEET

SEE



Permanent Marks

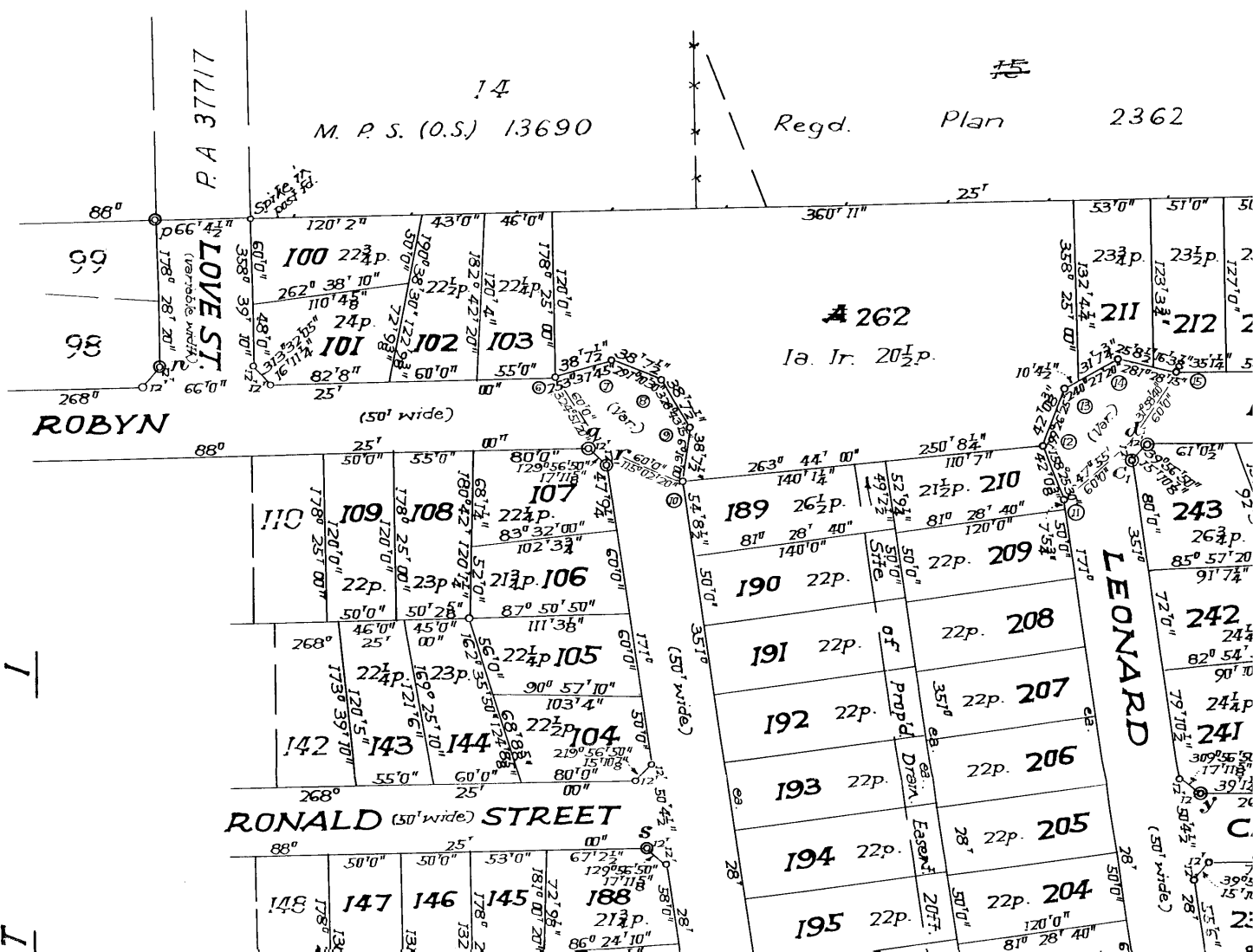
n	268° 28' 20"	1'6"	PMCB
p	331° 54' 20"	3'4 1/4"	"
q	178° 25' 00"	1'6"	"
r	267° 28' 40"	1'6"	"
s	178° 25' 00"	1'6"	"
t	267° 28' 40"	1'6"	"
u	90° 00'	1'6"	"
v	90° 00'	1'6"	"
w	359° 11' 50"	1'6"	"
x	81° 28' 40"	1'6"	"
y	358° 25' 00"	1'6"	"
z	344° 30' 30"	1'6 8/8"	"
a	344° 30' 30"	1'6 8/8"	"
b	192° 19' 30"	1'6 8/8"	"
c	81° 28' 40"	1'6"	"
d	178° 25' 00"	1'6"	"
e	178° 25' 00"	1'6"	"
f	358° 25' 00"	1'6"	"

D.P. 32163 (E) 2/2

D.P. 32163 (E)
sh 2/2

Scale: 80 feet to an Inch

H.C.P. H697556



PLAN

Sheet 1 of 2 sheets

and acquired for housing purposes

DP 32163

ECT COUNTY OF CUMBERLAND

ale: 80 feet to an inch

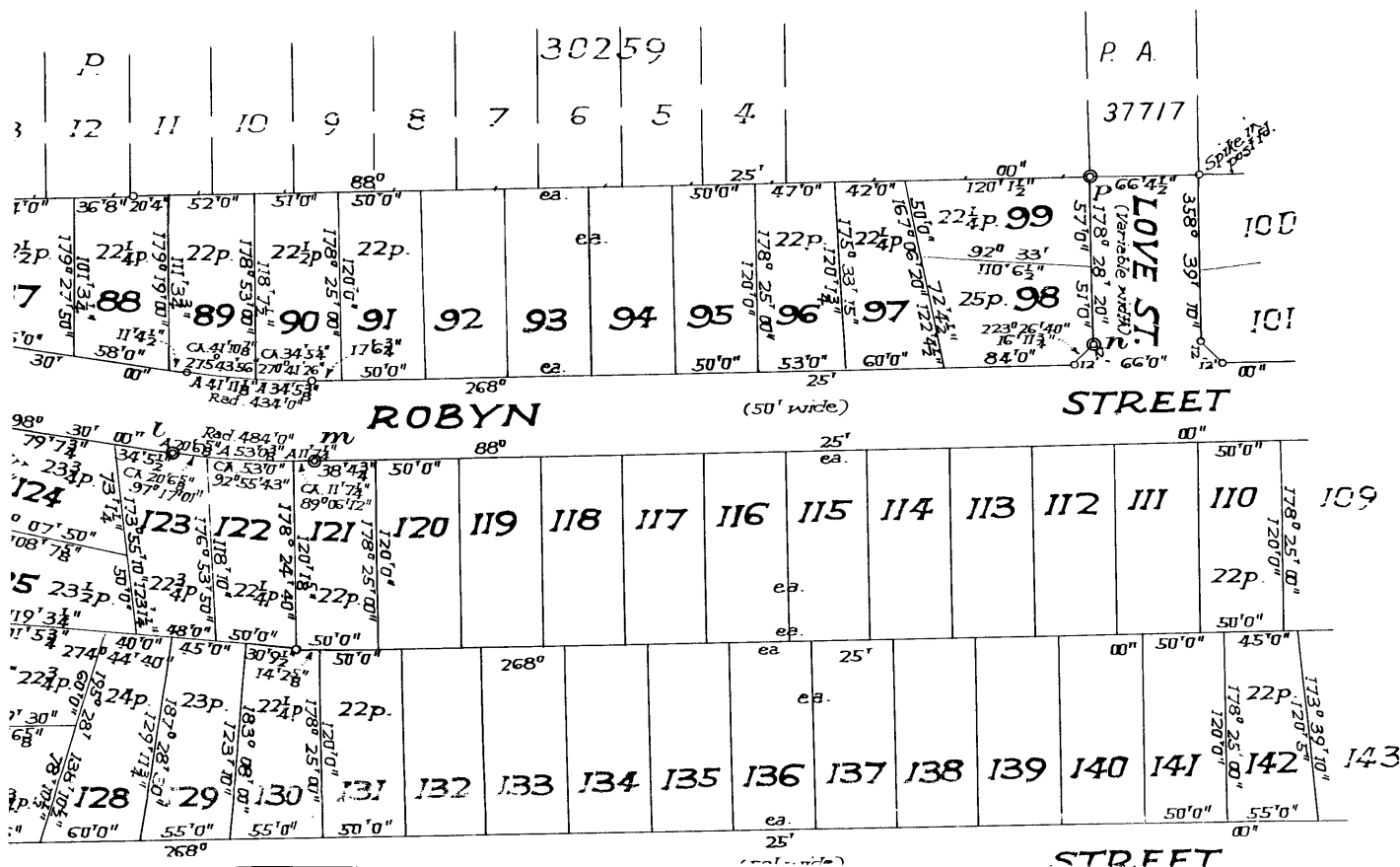
M M

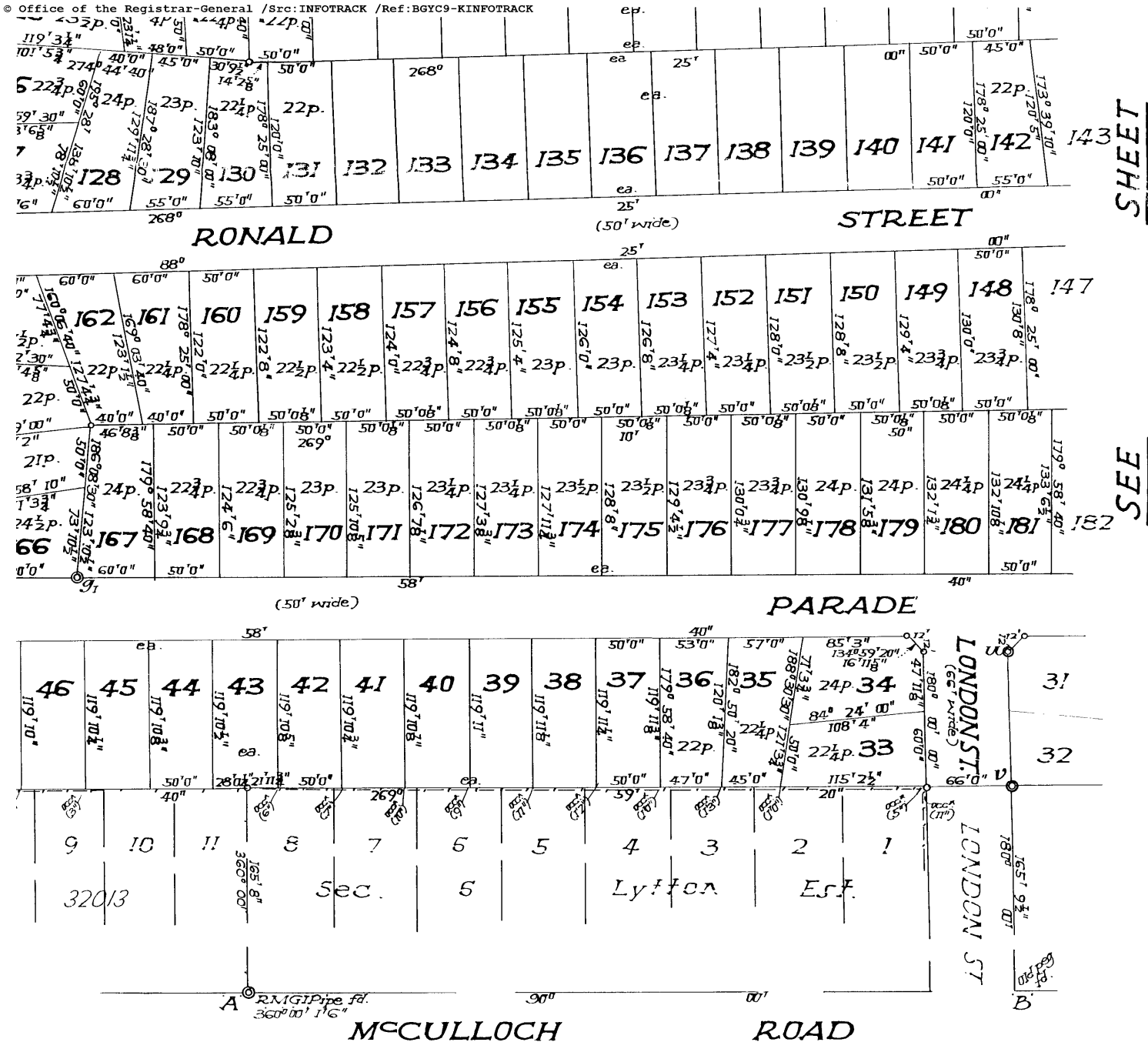
D. P. 32163 (E)



14-16-3-62

Title: Torrens
Purpose: Subdivision
Ref. Map: C.C.C. 325
Last Plan:





D.P. 32163 (E) 1/2

I, Thomas Stanislaus McKeon
 of 13 Bligh Street, Sydney.

a surveyor registered under the Surveyors Act, 1929-1946, hereby certify
 that the survey represented in this plan is accurate and has been made (1)
 by me (2) under my immediate supervision in accordance with the Survey
 Practice Regulations, 1933, and was completed on 16th Sept 1960.

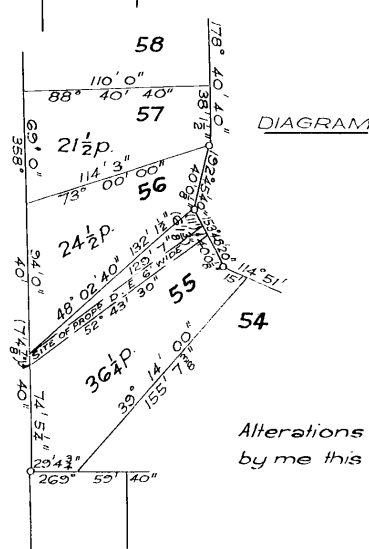
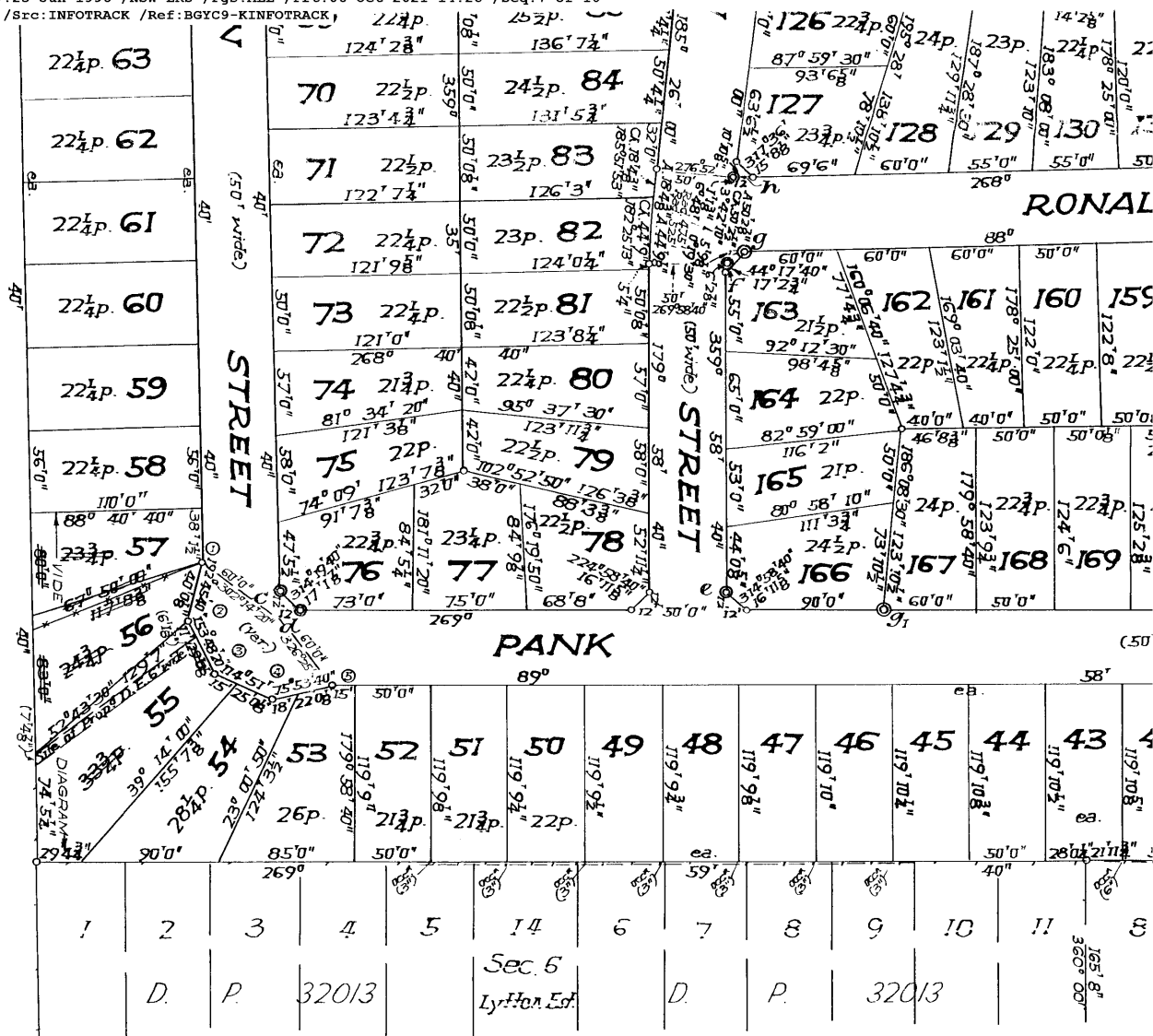
(Signature)

Surveyor registered under the Surveyors Act, 1929-46.

SHEET

SEE

1-2, 2-3, 3-4 and 4-5 are equal chords of
 radius 60 feet.



Alterations and amendments made by me this 2nd day of June 1961.

Ref: Neon.

D.P. 32163 (E) 1/2

Approved by the Council and Certified in accordance with the Provisions of Section 327 of the Local Government Act, 1919.

Subdivision No.

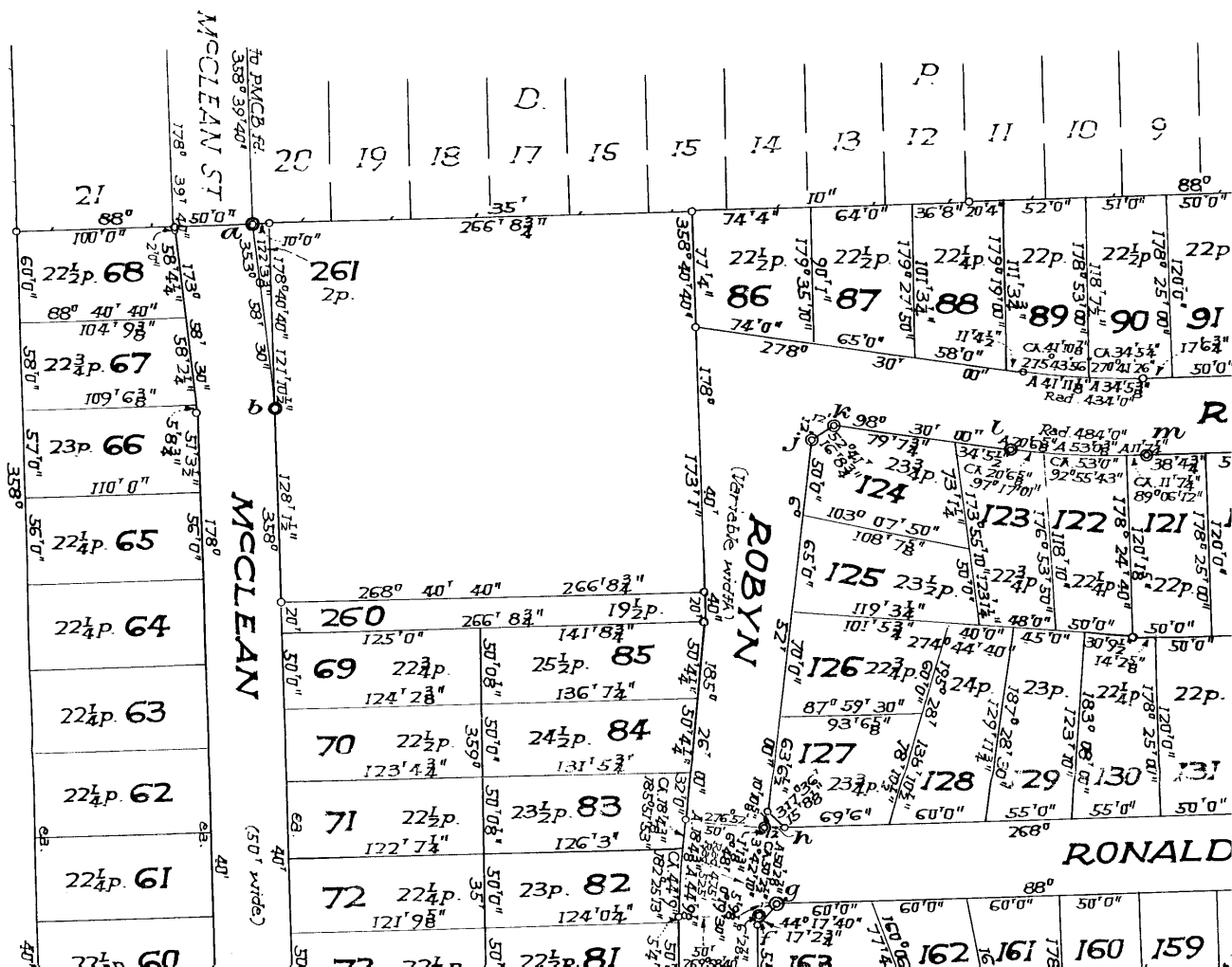
Council Clerk

Datum line of Azimuth A-B

Permanent Marks.			
a	152° 06' 00"	3 1/4"	PMCB, R.
b	86° 19' 35"	1 1/6"	PMCB.
c	88° 40' 40"	"	"
d	359° 58' 40"	"	"
e	89° 58' 40"	"	"
f	89° 58' 40"	"	"
g	178° 25' 00"	"	"
h	96° 52' 00"	"	"
j	96° 52' 00"	"	"
k	188° 30' 00"	"	"
l	188° 30' 00"	"	"
m	178° 25' 00"	"	"
n	268° 28' 20"	"	"
p	331° 54' 20"	3 1/4"	"
q	359° 58' 40"	1 1/6"	"

Boundaries 1-2, 2-3, 3-4 and 4-5 are equal to a circle of radius 60 feet.

D.P. 32163 (E) 1/2



CONVERSION TABLE ADDED IN
REGISTRAR GENERAL'S DEPARTMENT

DP 32163	SH	2/2	CONTD
FEET INCHES			METRES
1	1/4		0.032
2	1/2		0.051
3	3/4		0.076
4	1		0.103
5	1 1/4		0.128
6	1 1/2		0.152
7	1 3/4		0.177
8	2		0.203
9	2 1/4		0.228
10	2 1/2		0.254
11	2 3/4		0.279
12	3		0.305
13	3 1/4		0.330
14	3 1/2		0.355
15	3 3/4		0.381
16	4		0.406
17	4 1/4		0.432
18	4 1/2		0.457
19	4 3/4		0.482
20	5		0.508
21	5 1/4		0.533
22	5 1/2		0.558
23	5 3/4		0.584
24	6		0.609
25	6 1/4		0.635
26	6 1/2		0.660
27	6 3/4		0.686
28	7		0.711
29	7 1/4		0.737
30	7 1/2		0.762
31	7 3/4		0.787
32	8		0.813
33	8 1/4		0.838
34	8 1/2		0.863
35	8 3/4		0.889
36	9		0.914
37	9 1/4		0.939
38	9 1/2		0.965
39	9 3/4		0.990
40	10		1.016
41	10 1/4		1.041
42	10 1/2		1.067
43	10 3/4		1.092
44	11		1.117
45	11 1/4		1.143
46	11 1/2		1.168
47	11 3/4		1.193
48	12		1.219
49	12 1/4		1.244
50	12 1/2		1.269
51	12 3/4		1.295
52	13		1.320
53	13 1/4		1.345
54	13 1/2		1.371
55	13 3/4		1.396
56	14		1.421
57	14 1/4		1.447
58	14 1/2		1.472
59	14 3/4		1.497
60	15		1.523
61	15 1/4		1.548
62	15 1/2		1.573
63	15 3/4		1.599
64	16		1.624
65	16 1/4		1.649
66	16 1/2		1.675
67	16 3/4		1.700
68	17		1.726
69	17 1/4		1.751
70	17 1/2		1.776
71	17 3/4		1.802
72	18		1.827
73	18 1/4		1.852
74	18 1/2		1.878
75	18 3/4		1.903
76	19		1.928
77	19 1/4		1.954
78	19 1/2		1.979
79	19 3/4		2.004
80	20		2.030
81	20 1/4		2.055
82	20 1/2		2.080
83	20 3/4		2.106
84	21		2.131
85	21 1/4		2.156
86	21 1/2		2.182
87	21 3/4		2.207
88	22		2.232
89	22 1/4		2.258
90	22 1/2		2.283
91	22 3/4		2.308
92	23		2.334
93	23 1/4		2.359
94	23 1/2		2.384
95	23 3/4		2.410
96	24		2.435
97	24 1/4		2.460
98	24 1/2		2.486
99	24 3/4		2.511
100	25		2.536
101	25 1/4		2.562
102	25 1/2		2.587
103	25 3/4		2.612
104	26		2.638
105	26 1/4		2.663
106	26 1/2		2.688
107	26 3/4		2.714
108	27		2.739
109	27 1/4		2.764
110	27 1/2		2.789
111	27 3/4		2.815
112	28		2.840
113	28 1/4		2.865
114	28 1/2		2.891
115	28 3/4		2.916
116	29		2.941
117	29 1/4		2.967
118	29 1/2		2.992
119	29 3/4		3.017
120	30		3.043
121	30 1/4		3.068
122	30 1/2		3.093
123	30 3/4		3.119
124	31		3.144
125	31 1/4		3.169
126	31 1/2		3.194
127	31 3/4		3.220
128	32		3.245
129	32 1/4		3.270
130	32 1/2		3.296
131	32 3/4		3.321
132	33		3.346
133	33 1/4		3.372
134	33 1/2		3.397
135	33 3/4		3.422
136	34		3.448
137	34 1/4		3.473
138	34 1/2		3.498
139	34 3/4		3.523
140	35		3.549
141	35 1/4		3.574
142	35 1/2		3.599
143	35 3/4		3.624
144	36		3.650
145	36 1/4		3.675
146	36 1/2		3.700
147	36 3/4		3.726
148	37		3.751
149	37 1/4		3.776
150	37 1/2		3.802
151	37 3/4		3.827
152	38		3.852
153	38 1/4		3.878
154	38 1/2		3.903
155	38 3/4		3.928
156	39		3.953
157	39 1/4		3.979
158	39 1/2		4.004
159	39 3/4		4.029
160	40		4.054
161	40 1/4		4.080
162	40 1/2		4.105
163	40 3/4		4.130
164	41		4.155
165	41 1/4		4.181
166	41 1/2		4.206
167	41 3/4		4.231
168	42		4.256
169	42 1/4		4.282
170	42 1/2		4.307
171	42 3/4		4.332
172	43		4.357
173	43 1/4		4.383
174	43 1/2		4.408
175	43 3/4		4.433
176	44		4.459
177	44 1/4		4.484
178	44 1/2		4.509
179	44 3/4		4.534
180	45		4.560
181	45 1/4		4.585
182	45 1/2		4.610
183	45 3/4		4.635
184	46		4.661
185	46 1/4		4.686
186	46 1/2		4.711
187	46 3/4		4.736
188	47		4.762
189	47 1/4		4.787
190	47 1/2		4.812
191	47 3/4		4.837
192	48		4.863
193	48 1/4		4.888
194	48 1/2		4.913
195	48 3/4		4.938
196	49		4.964
197	49 1/4		4.989
198	49 1/2		5.014
199	49 3/4		5.039
200	50		5.064
201	50 1/4		5.090
202	50 1/2		5.115
203	50 3/4		5.140
204	51		5.165
205	51 1/4		5.191
206	51 1/2		5.216
207	51 3/4		5.241
208	52		5.266
209	52 1/4		5.292
210	52 1/2		5.317
211	52 3/4		5.342
212	53		5.367
213	53 1/4		5.393
214	53 1/2		5.418
215	53 3/4		5.443
216	54		5.468
217	54 1/4		5.494
218	54 1/2		5.519
219	54 3/4		5.544
220	55		5.569
221	55 1/4		5.595
222	55 1/2		5.620
223	55 3/4		5.645
224	56		5.671
225	56 1/4		5.696
226	56 1/2		5.721
227	56 3/4		5.746
228	57		5.772
229	57 1/4		5.797
230	57 1/2		5.822
231	57 3/4		5.847
232	58		5.873
233	58 1/4		5.898
234	58 1/2		5.923
235	58 3/4		5.948
236	59		5.974
237	59 1/4		5.999
238	59 1/2		6.024
239	59 3/4		6.049
240	60		6.074
241	60 1/4		6.100
242	60 1/2		6.125
243	60 3/4		6.150
244	61		6.175
245	61 1/4		6.201
246	61 1/2		6.226
247	61 3/4		6.251
248	62		6.276
249	62 1/4		6.302
250	62 1/2		6.327
251	62 3/4		6.352
252	63		6.377
253	63 1/4		6.403
254	63 1/2		6.428
255	63 3/4		6.453
256	64		6.478
257	64 1/4		6.504
258	64 1/2		6.529
259	64 3/4		6.554
260	65		6.579
261	65 1/4		6.605
262	65 1/2		6.630
263	65 3/4		6.655
264	66		6.681
265	66 1/4		6.706
266	66 1/2		6.731
267	66 3/4		6.756
268	67		6.782
269	67 1/4		6.807
270	67 1/2		6.832
271	67 3/4		6.857
272	68		6.883
273	68 1/4		6.908
274	68 1/2		6.933
275	68 3/4		6.958
276	69		6.984
277	69 1/4		7.009
278	69 1/2		7.034
279	69 3/4		7.059
280	70		7.084
281	70 1/4		7.110
282	70 1/2		7.135
283	70 3/4		7.160
284	71		7.185
285	71 1/4		7.211
286	71 1/2		7.236
287	71 3/4		7.261
288	72		7.287
289	72 1/4		7.312
290	72 1/2		7.337
291	72 3/4		7.362
292	73		7.388
293	73 1/4		7.413
294	73 1/2		7.438
295	73 3/4		7.463
296	74		7.489
297	74 1/4		7.514
298	74 1/2		7.539
299	74 3/4		7.564
300	75		7.589
301	75 1/4		7.615
302	75 1/2		7.640
303	75 3/4		7.665
304	76		7.690
305	76 1/4		7.716
306	76 1/2		7.741
307	76 3/4		7.766
308	77		7.791
309	77 1/4		7.817
310	77 1/2		7.842
311	77 3/4		7.867
312	78		7.892
313	78 1/4		7.918
314	78 1/2		7.943
315	78 3/4		7.968
316	79		7.993
317	79 1/4		8.019
318	79 1/2		8.044
319	79 3/4		8.069
320	80		8.094
321	80 1/4		8.120
322	80 1/2		8.145
323	80 3/4		8.170
324	81		8.195
325	81 1/4		8.221
326	81 1/2		8.246
327	81 3/4		8.271
328	82		8.296
329	82 1/4		8.322
330	82 1/2		8.347
331	82 3/4		8.372
332	83		8.397
333	83 1/4		8.423
334	83 1/2		8.448
335	83 3/4		8.473
336	84		8.498
337	84 1/4		8.524
338	84 1/2		8.549
339	84 3/4		8.574
340	85		8.599
341	85 1/4		8

CONVERSION TABLE ADDED IN
 REGISTRAR GENERAL'S DEPARTMENT

DP 32163	SH	1/2	FEET INCHES	METRES
10	1	1/2	0 1/4	0.06
11	1	1/2	0 3/8	0.076
12	1	1/2	0 1/2	0.127
13	1	1/2	0 5/8	0.152
14	1	1/2	0 3/4	0.178
15	1	1/2	0 7/8	0.229
16	1	1/2	0 1	0.254
17	1	1/2	0 1 1/8	0.279
18	1	1/2	0 1 1/4	0.305
19	1	1/2	0 1 1/2	0.337
20	1	1/2	0 1 3/4	0.340
21	1	1/2	0 1 7/8	0.356
22	1	1/2	0 2	0.381
23	1	1/2	0 2 1/8	0.457
24	1	1/2	0 2 1/4	0.610
25	1	1/2	0 2 1/2	1.022
26	1	1/2	0 2 3/4	1.626
27	1	1/2	0 3	1.746
28	1	1/2	0 3 1/8	1.756
29	1	1/2	0 3 1/4	1.829
30	1	1/2	0 3 1/2	1.864
31	1	1/2	0 3 3/4	1.902
32	1	1/2	0 4	2.207
33	1	1/2	0 4 1/8	2.257
34	1	1/2	0 4 1/4	2.267
35	1	1/2	0 4 1/2	3.048
36	1	1/2	0 4 3/4	3.353
37	1	1/2	0 5	3.467
38	1	1/2	0 5 1/8	3.537
39	1	1/2	0 5 1/4	3.658
40	1	1/2	0 5 1/2	4.267
41	1	1/2	0 5 3/4	4.334
42	1	1/2	0 6	4.572
43	1	1/2	0 6 1/8	4.778
44	1	1/2	0 6 1/4	5.099
45	1	1/2	0 6 1/2	5.175
46	1	1/2	0 6 3/4	5.229
47	1	1/2	0 7	5.251
48	1	1/2	0 7 1/8	5.353
49	1	1/2	0 7 1/4	5.486
50	1	1/2	0 7 1/2	5.598
51	1	1/2	0 7 3/4	5.607
52	1	1/2	0 8	6.096
53	1	1/2	0 8 1/8	6.198
54	1	1/2	0 8 1/4	6.264
55	1	1/2	0 8 1/2	6.599
56	1	1/2	0 8 3/4	6.709
57	1	1/2	0 9	7.315
58	1	1/2	0 9 1/8	7.623
59	1	1/2	0 9 1/4	8.541
60	1	1/2	0 9 1/2	8.960
61	1	1/2	0 9 3/4	9.754
62	1	1/2	10	10.497
63	1	1/2	10 1/8	10.500
64	1	1/2	10 1/4	10.503
65	1	1/2	10 1/2	11.176
66	1	1/2	10 3/4	11.582
67	1	1/2	11	11.621
68	1	1/2	11 1/8	11.703
69	1	1/2	11 1/4	12.129
70	1	1/2	11 1/2	12.192
71	1	1/2	11 3/4	12.195
72	1	1/2	12	12.773
73	1	1/2	12 1/8	12.779
74	1	1/2	12 1/4	13.427
75	1	1/2	12 1/2	13.640
76	1	1/2	12 3/4	13.716
77	1	1/2	13	14.167
78	1	1/2	13 1/8	14.234
79	1	1/2	13 1/4	14.259
80	1	1/2	13 1/2	14.326
81	1	1/2	13 3/4	14.465
82	1	1/2	14	14.608
83	1	1/2	14 1/8	14.627

CONVERSION TABLE ADDED IN
 REGISTRAR GENERAL'S DEPARTMENT

DP 32163	SH	1/2	CONT'D	FEET INCHES	METRES
48	-	-	14.630	0 1/4	0.06
49	-	-	15.240	0 3/8	0.076
50	-	-	15.243	0 1/2	0.127
51	-	-	15.304	0 5/8	0.152
52	-	-	15.313	0 3/4	0.178
53	-	-	15.348	0 7/8	0.229
54	-	-	15.545	0 1	0.254
55	-	-	15.820	0 1 1/8	0.279
56	-	-	16.135	0 1 1/4	0.305
57	-	-	16.154	0 1 1/2	0.337
58	-	-	16.164	0 1 3/4	0.340
59	-	-	16.709	0 1 7/8	0.356
60	-	-	17.069	0 2	0.381
61	-	-	17.314	0 2 1/8	0.457
62	-	-	17.463	0 2 1/4	0.610
63	-	-	17.736	0 2 1/2	1.022
64	-	-	17.736	0 2 3/4	1.626
65	-	-	18.288	0 3	1.746
66	-	-	19.358	0 3 1/8	1.756
67	-	-	19.507	0 3 1/4	1.829
68	-	-	20.117	0 3 1/2	1.864
69	-	-	20.291	0 3 3/4	1.902
70	-	-	21.031	0 4	2.207
71	-	-	21.184	0 4 1/8	2.257
72	-	-	21.336	0 4 1/4	2.267
73	-	-	22.060	0 4 1/2	3.048
74	-	-	22.250	0 4 3/4	3.353
75	-	-	22.282	0 5	3.467
76	-	-	22.420	0 5 1/8	3.537
77	-	-	22.478	0 5 1/4	3.658
78	-	-	22.517	0 5 1/2	4.267
79	-	-	22.555	0 5 3/4	4.334
80	-	-	22.689	0 6	4.572
81	-	-	22.860	0 6 1/8	4.778
82	-	-	23.571	0 6 1/4	5.099
83	-	-	23.590	0 6 1/2	5.175
84	-	-	24.014	0 6 3/4	5.229
85	-	-	24.216	0 7	5.251
86	-	-	25.403	0 7 1/8	5.353
87	-	-	25.737	0 7 1/4	5.486
88	-	-	25.854	0 7 1/2	5.598
89	-	-	25.908	0 7 3/4	5.607
90	-	-	26.998	0 8	6.096
91	-	-	27.432	0 8 1/8	6.198
92	-	-	27.457	0 8 1/4	6.264
93	-	-	27.924	0 8 1/2	6.599
94	-	-	28.451	0 8 3/4	6.709
95	-	-	29.988	0 9	7.315
96	-	-	29.997	0 9 1/8	7.623
97	-	-	30.480	0 9 1/4	8.541
98	-	-	30.867	0 9 1/2	8.960
99	-	-	31.937	0 9 3/4	9.754
100	-	-	32.091	10	10.497
101	-	-	33.112	10 1/8	10.500
102	-	-	33.122	10 1/4	10.503
103	-	-	33.585	10 1/2	11.176
104	-	-	33.528	10 3/4	11.582
105	-	-	33.528	11	11.621
106	-	-	33.693	11 1/8	11.703
107	-	-	33.928	11 1/4	12.129
108	-	-	34.823	11 1/2	12.192
109	-	-	35.116	11 3/4	12.195
110	-	-	35.408	12	12.773
111	-	-	35.457	12 1/8	12.779
112	-	-	36.157	12 1/4	13.427
113	-	-	36.220	12 1/2	13.640
114	-	-	36.354	12 3/4	13.716
115	-	-	36.500	13	14.167
116	-	-	36.503	13 1/8	14.234
117	-	-	36.513	13 1/4	14.259
118	-	-	36.513	13 1/2	14.326
119	-	-	36.513	13 3/4	14.465
120	-	-	36.513	14	14.608

CONVERSION TABLE ADDED IN
 REGISTRAR GENERAL'S DEPARTMENT

DP 32163	SH	1/2	CONT'D	FEET INCHES	METRES
119	-	-	36.522	9 7/8	0.06
120	-	-	36.525	10	0.076
121	-	-	36.532	10 1/8	0.127
122	-	-	36.535	10 1/4	0.152
123	-	-	36.538	10 3/8	0.178
124	-	-	36.541	10 5/8	0.229
125	-	-	36.544	10 3/4	0.254
126	-	-	36.551	10 7/8	0.279
127	-	-	36.554	11	0.305
128	-	-	36.557	11 1/8	0.337
129	-	-	36.560	11 1/4	0.340
130	-	-	36.561	11 3/8	0.356
131	-	-	36.611	11 1/2	0.381
132	-	-	36.614	11 3/4	0.457
133	-	-	36.617	11 7/8	0.610
134	-	-	36.620	12	1.022
135	-	-	36.673	12 1/8	1.626
136	-	-	36.681	12 1/4	1.746
137	-	-	36.681	12 1/2	1.756
138	-	-	36.681	12 3/4	1.829
139	-	-	36.681	13	1.864
140	-	-	36.681	13 1/8	1.902
141	-	-	36.681	13 1/4	2.207
142	-	-	36.681	13 1/2	2.257
143	-	-	36.681	13 3/4	2.267
144	-	-	36.681	14	3.048
145	-	-	36.681	14 1/8	3.353
146	-	-	36.681	14 1/4	3.467
147	-	-	36.681	14 1/2	3.537
148	-	-	36.681	14 3/4	3.658
149	-	-	36.681	15	4.267
150	-	-	36.681	15 1/8	4.334
151	-	-	36.681	15 1/4	4.572
152	-	-	36.681	15 1/2	4.778
153	-	-	36.681	15 3/4	5.099
154	-	-	36.681	16	5.175
155	-	-	36.681	16 1/8	5.229
156	-	-	36.681	16 1/4	5.251
157	-	-	36.681	16 1/2	5.353
158	-	-	36.681	16 3/4	5.486
159	-	-	36.681	17	5.598
160	-	-	36.681	17 1/8	5.607

CONVERSION TABLE ADDED IN
 REGISTRAR GENERAL'S DEPARTMENT

DP 32163	SH	1/2	CONT'D	FEET INCHES	METRES
131	-	-	40.075	5 3/4	0.06
132	-	-	40.272	1 1/2	0.076
133	-	-	40.278	1 3/4	0.127
134	-	-	40.488	10	0.152
135	-	-	40.491	10 1/8	0.178
136	-	-	40.704	10 1/4	0.229
137	-	-	41.637	10 3/8	0.254
138	-	-	42.329	10 5/8	0.279
139	-	-	43.199	10 3/4	0.305
140	-	-	43.317	10 7/8	0.337
141	-	-	47.390	11	0.340
142	-	-	47.431	11 1/8	0.356
143	-	-	50.524	11 1/4	0.381
144	-	-	50.523	11 3/8	0.457
145	-	-	52.426	11 1/2	0.610
146	-	-	52.756	11 3/4	1.022
147	-	-	54.559	11 7/8	1.626
148	-	-	81.013	12	1.746
149	-	-	81.299	12 1/8	1.756
150	-	-	109.156	12 1/4	1.829
151	-	-	132.483	12 1/2	1.864
152	-	-	147.523	12 3/4	1.902
153	-	-	160.020	13	2.207
154	-	-	342.900	13 1/8	2.257
155	-	-		13 1/4	2.267
156	-	-		14	3.048
157	-	-		14 1/8	3.353
158	-	-		14 1/4	3.467
159	-	-		14 1/2	3.537
160	-	-		14 3/4	3.658
161	-	-		15	4.267
162	-	-		15 1/8	4.334
163	-	-		15 1/4	4.572
164	-	-		15 1/2	4.778
165	-	-		15 3/4	5.099
166	-	-		16	5.175
167	-	-		16 1/8	5.229
168	-	-		16 1/4	5.



FOLIO: 41/32163

SEARCH DATE	TIME	EDITION NO	DATE
-----	----	-----	----
6/10/2021	2:18 PM	-	-

VOL 9175 FOL 84 IS THE CURRENT CERTIFICATE OF TITLE

LAND

LOT 41 IN DEPOSITED PLAN 32163
LOCAL GOVERNMENT AREA BLACKTOWN
PARISH OF PROSPECT COUNTY OF CUMBERLAND
TITLE DIAGRAM DP32163

FIRST SCHEDULE

NEW SOUTH WALES LAND AND HOUSING CORPORATION

SECOND SCHEDULE (2 NOTIFICATIONS)

- 1 RESERVATIONS AND CONDITIONS IN THE CROWN GRANT(S)
- * 2 DP1262089 EASEMENT FOR DRAINAGE OF WATER 1 METRE(S) WIDE
AFFECTING THE PART(S) SHOWN SO BURDENED IN DP1262089

NOTATIONS

UNREGISTERED DEALINGS: NIL

*** END OF SEARCH ***



FOLIO: 42/32163

SEARCH DATE	TIME	EDITION NO	DATE
-----	----	-----	----
6/10/2021	2:18 PM	-	-

VOL 9175 FOL 85 IS THE CURRENT CERTIFICATE OF TITLE

LAND

LOT 42 IN DEPOSITED PLAN 32163
LOCAL GOVERNMENT AREA BLACKTOWN
PARISH OF PROSPECT COUNTY OF CUMBERLAND
TITLE DIAGRAM DP32163

FIRST SCHEDULE

NEW SOUTH WALES LAND AND HOUSING CORPORATION

SECOND SCHEDULE (1 NOTIFICATION)

1 RESERVATIONS AND CONDITIONS IN THE CROWN GRANT(S)

NOTATIONS

UNREGISTERED DEALINGS: NIL

*** END OF SEARCH ***



LAND
REGISTRY
SERVICES

Title Search



NEW SOUTH WALES LAND REGISTRY SERVICES - TITLE SEARCH

FOLIO: 43/32163

SEARCH DATE	TIME	EDITION NO	DATE
-----	----	-----	----
6/10/2021	2:18 PM	-	-

VOL 9175 FOL 86 IS THE CURRENT CERTIFICATE OF TITLE

LAND

LOT 43 IN DEPOSITED PLAN 32163
LOCAL GOVERNMENT AREA BLACKTOWN
PARISH OF PROSPECT COUNTY OF CUMBERLAND
TITLE DIAGRAM DP32163

FIRST SCHEDULE

NEW SOUTH WALES LAND AND HOUSING CORPORATION

SECOND SCHEDULE (1 NOTIFICATION)

1 RESERVATIONS AND CONDITIONS IN THE CROWN GRANT(S)

NOTATIONS

UNREGISTERED DEALINGS: NIL

*** END OF SEARCH ***

BGYC9-KM

PRINTED ON 6/10/2021

* Any entries preceded by an asterisk do not appear on the current edition of the Certificate of Title. Warning: the information appearing under notations has not been formally recorded in the Register. InfoTrack an approved NSW Information Broker hereby certifies that the information contained in this document has been provided electronically by the Registrar General in accordance with Section 96B(2) of the Real Property Act 1900.

ePlan

**INSTRUMENT SETTING OUT TERMS OF EASEMENTS, RESTRICTIONS ON USE
AND POSITIVE COVENANTS INTENDED TO BE CREATED PURSUANT TO
SECTION 88B OF THE CONVEYANCING ACT 1919**

Lengths are in metres

(Sheet 1 of 1 sheets)

Plan: **DP1262089**

Plan of Easement affecting Lot 41 in DP32163

Full name and address of the
owner of the land:

New South Wales Land and Housing Corporation
ABN 24 960 729 253
223-239 Liverpool Road
ASHFIELD NSW 2131

PART 1

No. of item shown in the intention panel on the plan	Identity of easements, restrictions and positive covenants to be created and referred to in the plan	Burdened lot(s) or parcel(s)	Benefited lot(s) or Prescribed Authorities
1	Easement for Drainage of Water 1 wide (A)	Lot 41 in DP32163	Lot 7 of Section 6 in DP975248

PART 2

1. Terms of EASEMENT FOR DRAINAGE OF WATER 1 WIDE (A) numbered 1 in the plan

An Easement for Drainage of Water is created in the terms set out in Part 8 Schedule 8 of the
Conveyancing Act 1919 (NSW) as amended.

EXECUTED by ...JENK WEL LAM.....)
As Delegate of the New South Wales Land and)
Housing Corporation (ABN 24 960 729 253))
And I hereby certify that I have no notice of)
revocation of such delegation)


.....
Signature of Delegate

SENIOR SOLICITOR



Signature of Witness

Dana Lowe

Name of Witness

223-239 Liverpool Rd
Address ASHFIELD 2131

REGISTERED

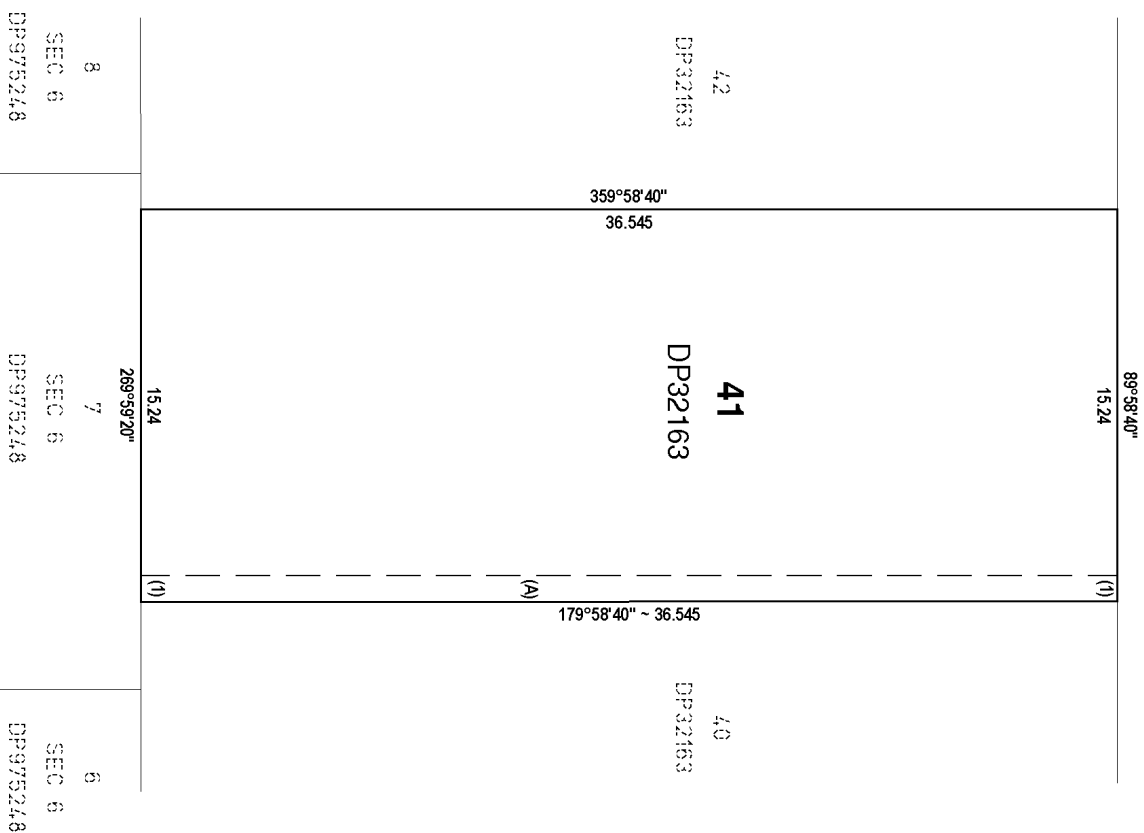


10/03/2020



PANK

PARADE



(A) EASEMENT FOR DRAINAGE OF WATER 1 WIDE

Surveyor:

MICHAEL TRIFIRO

Date of Survey: 20/02/2020

Surveyor's Ref: 7803

PLAN OF EASEMENT AFFECTING LOT 41 IN DP32163

L G A: BLACKTOWN

Locality: BLACKTOWN

Reduction Ratio 1:200


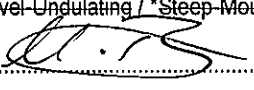
Lengths are in metres.

REGISTERED

10/03/2020

DP1262089

ePlan

PLAN FORM 6 (2017)		DEPOSITED PLAN ADMINISTRATION SHEET		Sheet 1 of 2 sheet(s)	
Office Use Only Registered:  10/03/2020 Title System: TORRENS			Office Use Only <h1 style="text-align: center;">DP1262089</h1>		
PLAN OF EASEMENT AFFECTING LOT 41 IN DP32163			LGA: BLACKTOWN Locality: BLACKTOWN Parish: PROSPECT County: CUMBERLAND		
Survey Certificate I, MICHAEL TRIFIRO of SDG LAND DEVELOPMENT SOLUTIONS P.O. Box 2572, NORTH PARRAMATTA 1750 a surveyor registered under the <i>Surveying and Spatial Information Act 2002</i> , certify that: *(a) The land shown in the plan was surveyed in accordance with the Surveying and Spatial Information Regulation 2017, is accurate and the survey was completed on, or *(b) The part of the land shown in the plan (*being/*excluding **,) was surveyed in accordance with the Surveying and Spatial Information Regulation 2017, the part surveyed is accurate and the survey was completed on, the part not surveyed was compiled in accordance with that Regulation, or *(c) The land shown in this plan was compiled in accordance with the <i>Surveying and Spatial Information Regulation 2017</i> . Datum Line: Type: *Urban/*Rural The terrain is *Level-Undulating / *Steep-Mountainous. Signature:  Dated: 20/02/2020 Surveyor Identification No: 8624 Surveyor registered under the <i>Surveying and Spatial Information Act 2002</i> *Strike out inappropriate words. **Specify the land actually surveyed or specify any land shown in the plan that			Crown Lands NSW/Western Lands Office Approval I, (Authorised Officer) in approving this plan certify that all necessary approvals in regard to the allocation of the land shown herein have been given. Signature: Date: File Number: Office:		
Plans used in the preparation of survey/compilation. DP32163			Subdivision Certificate I, *Authorised Person/*General Manager/*Accredited Certifier, certify that the provisions of s.109J of the <i>Environmental Planning and Assessment Act 1979</i> have been satisfied in relation to the proposed subdivision, new road or reserve set out herein. Signature: Accreditation number: Consent Authority: Date of endorsement: Subdivision Certificate number: File number: *Strike through if inapplicable.		
Surveyor's Reference: 7803			Statements of intention to dedicate public roads, create public reserves and drainage reserves, acquire/resume land.		
			Signatures, Seals and Section 88B Statements should appear on PLAN FORM 6A		

ePlan

PLAN FORM 6A (2017)

DEPOSITED PLAN ADMINISTRATION SHEET

Sheet 2 of 2 sheet(s)

Registered:



10/03/2020

Office Use Only

Office Use Only

PLAN OF EASEMENT AFFECTING LOT 41 IN
DP32163

DP1262089

Subdivision Certificate number:

Date of Endorsement:

This sheet is for the provision of the following information as required:

- A schedule of lots and addresses - See 60(c) *SSI Regulation 2017*
- Statements of intention to create and release affecting interests in accordance with section 88B *Conveyancing Act 1919*
- Signatures and seals- see 195D *Conveyancing Act 1919*
- Any information which cannot fit in the appropriate panel of sheet 1 of the administration sheets.

PURSUANT TO SECTION 88B OF THE CONVEYANCING ACT 1919 IT IS INTENDED,

TO CREATE:

1. EASEMENT FOR DRAINAGE OF WATER 1 WIDE (A)

EXECUTED by JENGA UEL LAM)
As Delegate of the New South Wales Land and)
Housing Corporation (ABN 24 960 729 253))
And I hereby certify that I have no notice of)
revocation of such delegation)

Signature of Delegate

SENIOR SOLICITOR

Signature of Witness

Dana Lowe

Name of Witness

223-239 Liverpool Rd,
Address ASHFIELD 2131

If space is insufficient use additional annexure sheet

Surveyor's Reference: 7803